



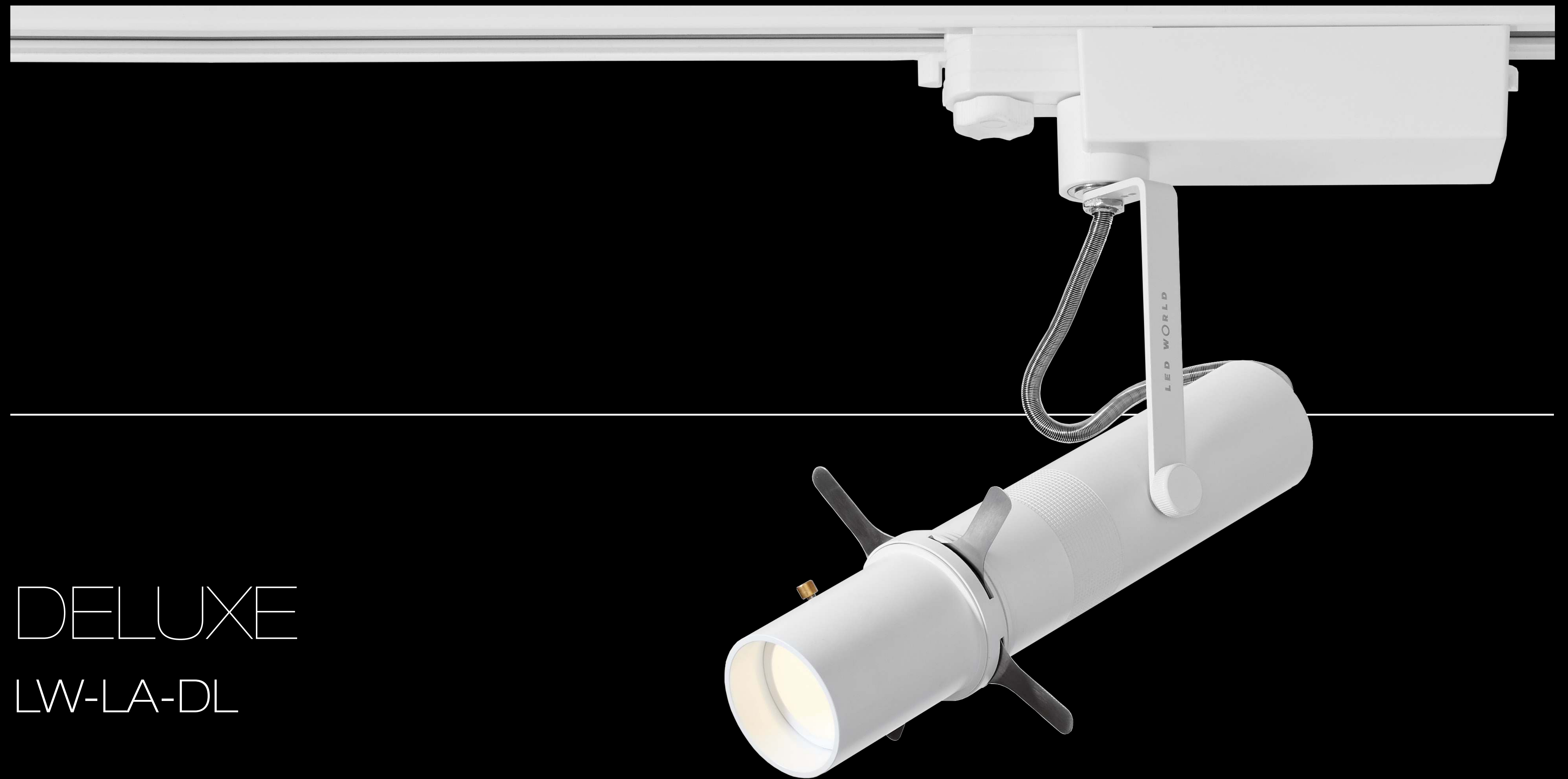
**l'art<sup>®</sup>**

DELUXE  
LW-LA-DL

GALLERY &

MUSEUM

LIGHTING



DELUXE  
LW-LA-DL

# DELUXE

## LW-LA-DL

**FITTING COLOUR**  
Black, White

**LIGHT SOURCE**  
COB LED

**COLOUR TEMPERATURE**  
Warm White 3000K  
Cool White 5500K

**MOUNTING METHOD**  
Single Circuit / 3 Circuit

**DIMENSIONS**  
156mm (length) x Ø 65mm

**VOLTAGE**  
240V/12V

**TILT, ROTATE ANGLE**  
90°, 350°

**BEAM ANGLE**  
multiple filters / framing tool

**POWER**  
30W

**CRI**  
95

**LUMEN OUTPUT**  
3300lm

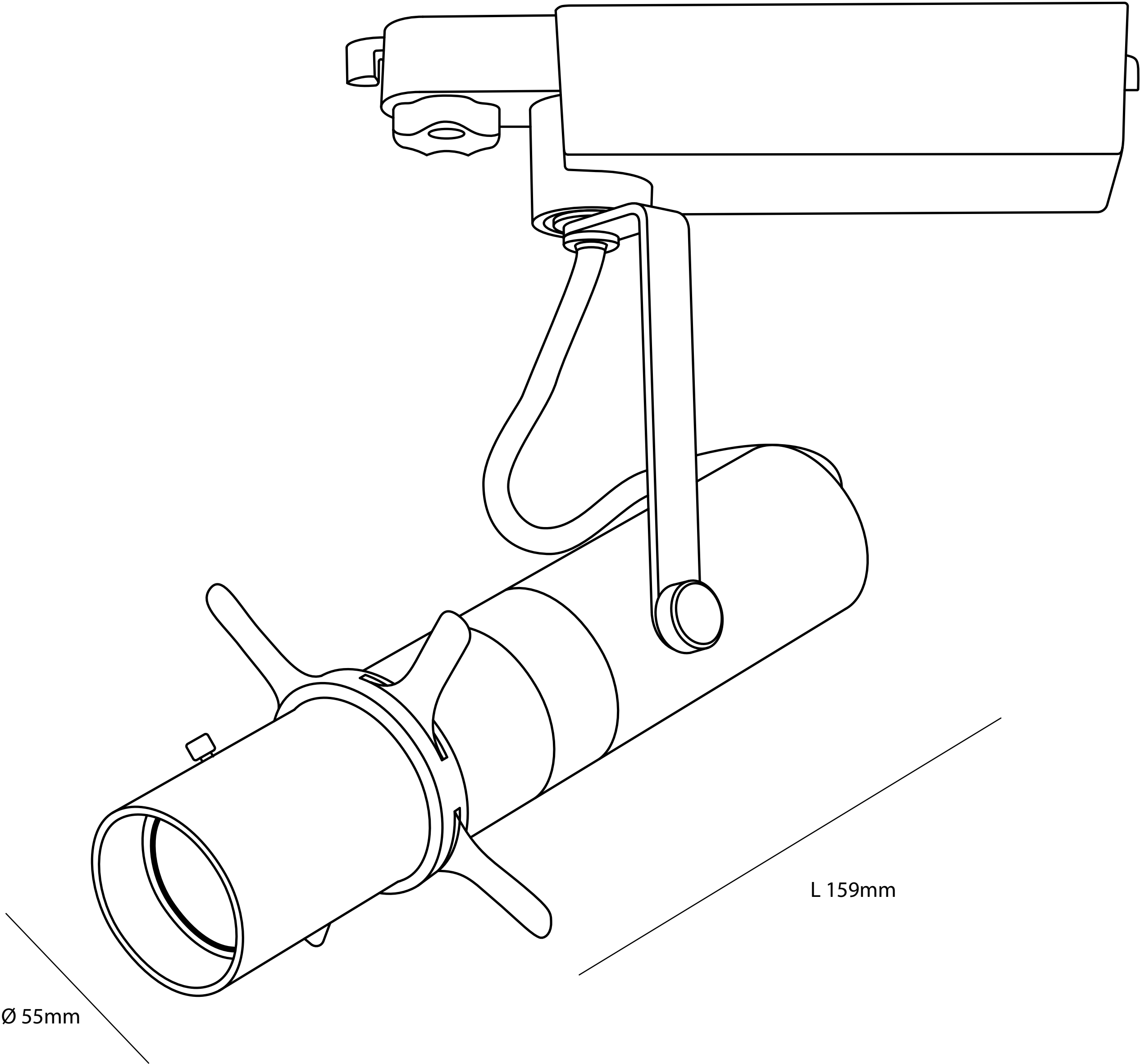
**AVERAGE LIFESPAN**  
50,000 Hours

**DIMMING OPTIONS**  
1-10V onboard dimming

**TRIM COLOUR**  
Black or White

**PRODUCT WARRANTY**  
3 Years Manufacturers  
Warranty

**WATERPROOF RATING**  
IP20 (for indoor use only)



# DELUXE

## LW-LA-DL

### 3 Circuit

Different lights can be turned ON/OFF on the same track, the dimming is done on the fitting itself via the knob.

### 90° Tilt/360 Swivel

You can tilt the light up and down pointing in closer to the object that you need to illuminate. Swivel You can swivel the the light 360° giving a full range of motion.

### CRI 95

Colour Rendering Index of 90 is the quality of the LED that is used. This means the colours of the art work remain vibrant.

### Sharpen/Soften

This button allows you to sharpen the edge of the framed light or soften the degree of faded/soft edges.

### Cast Aluminium, Powder Coated

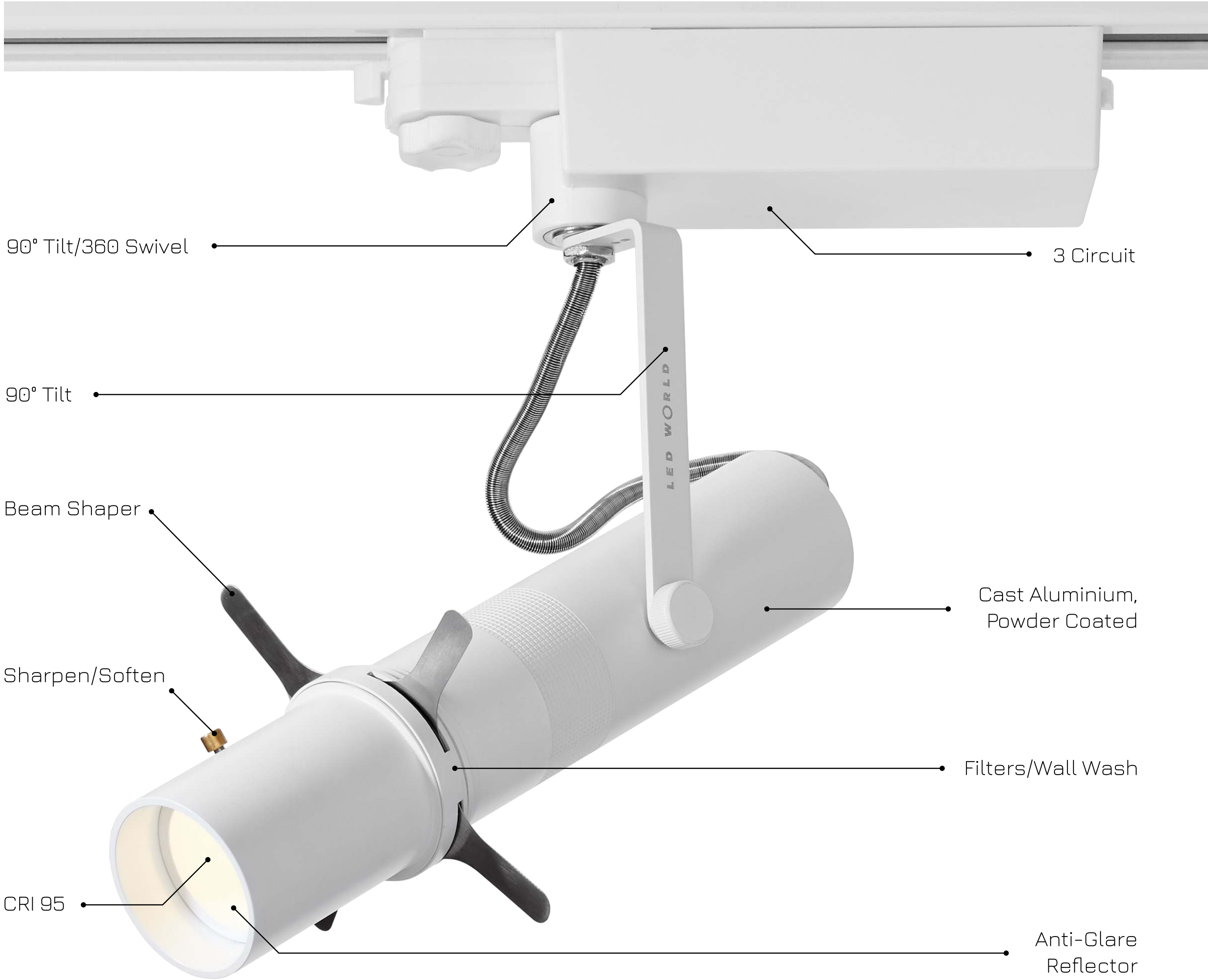
The body of the luminaire is a strong cast aluminum with a matte finish powder coat.

### Beam Shaper

Frame the art so it appears the artworks are back lit. Frame as small as 10 x 10cm and upto 300 x 175cm artworks from just one light fitting.

### Filters/Wall Wash

With the option to remove the framer you can use one of many filters to create narrow spots, wide beams, vertical, horizontal, honey-comb filters and wall wash light effects.



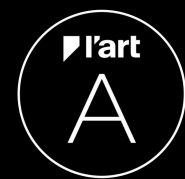
# DELUXE

AVAILABLE IN BLACK OR WHITE FINISH



# DELUXE INSTALATION

## LW-LA-DL



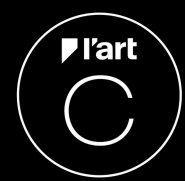
### Distance from Wall:

The best mounting is 3 - 10 mm distance away from the artworks. This product can shape art from a long distance.



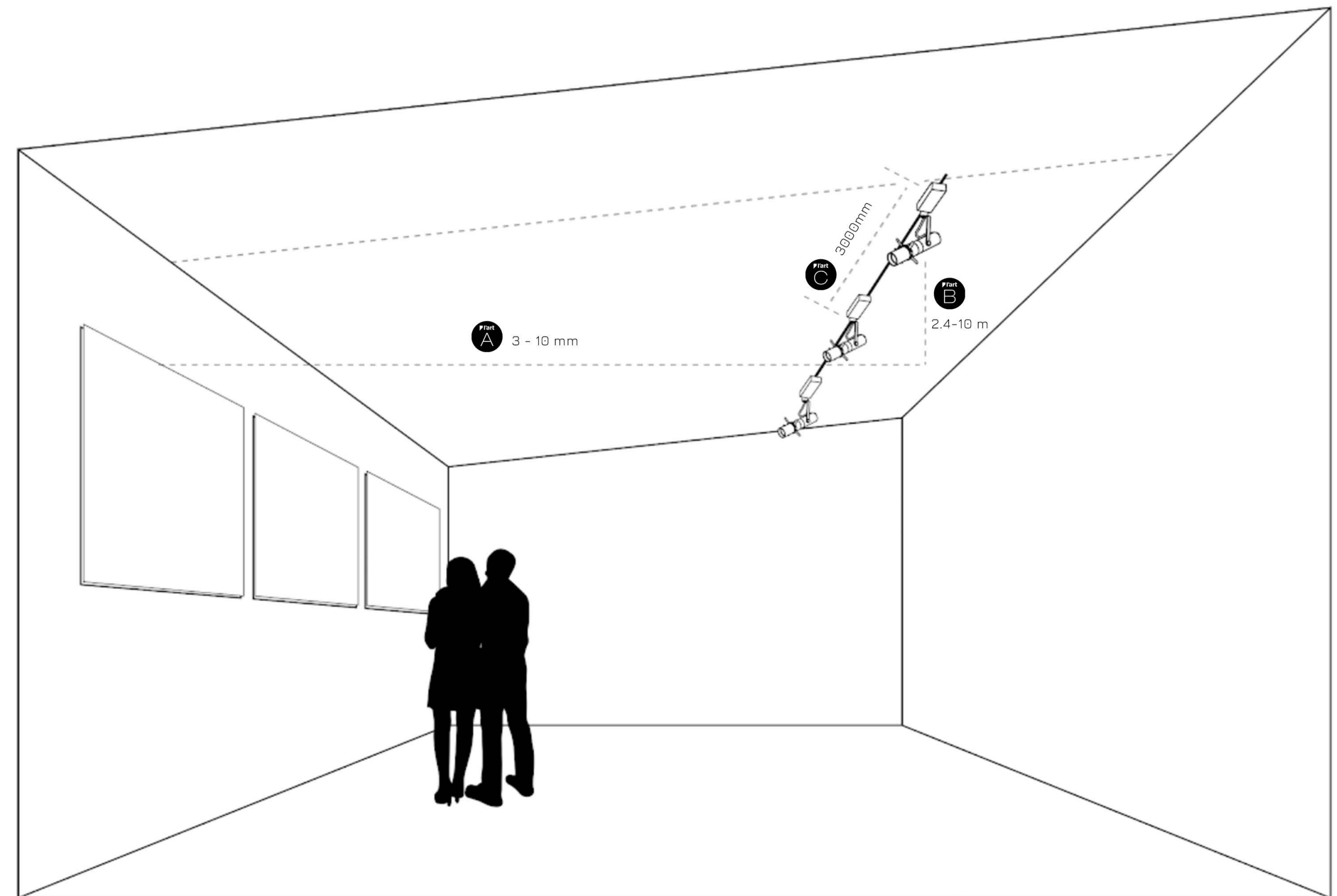
### Mounting Height:

Mounting Height is flexible from 2.4 to 10 meters height.



### Distance Apart:

The deluxe can be installed 3000mm distance apart because of the wide wall wash and art shaping design.















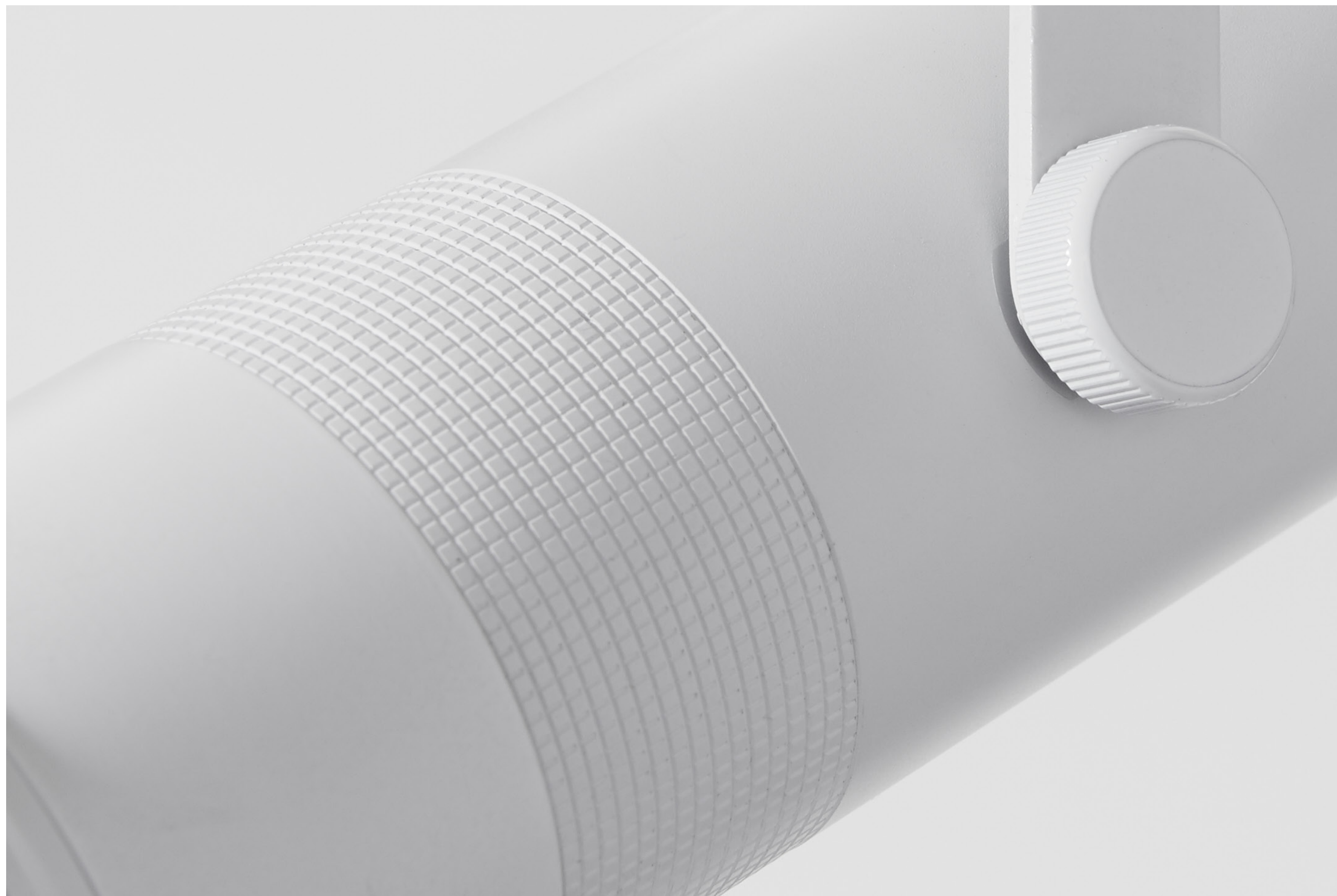




















# l'art<sup>®</sup>

GALLERY &  
MUSEUM  
LIGHTING

PH: (02) 8091 2950

INFO@LEDWORLD.COM.AU

WWW.LEDWORLD.COM.AU